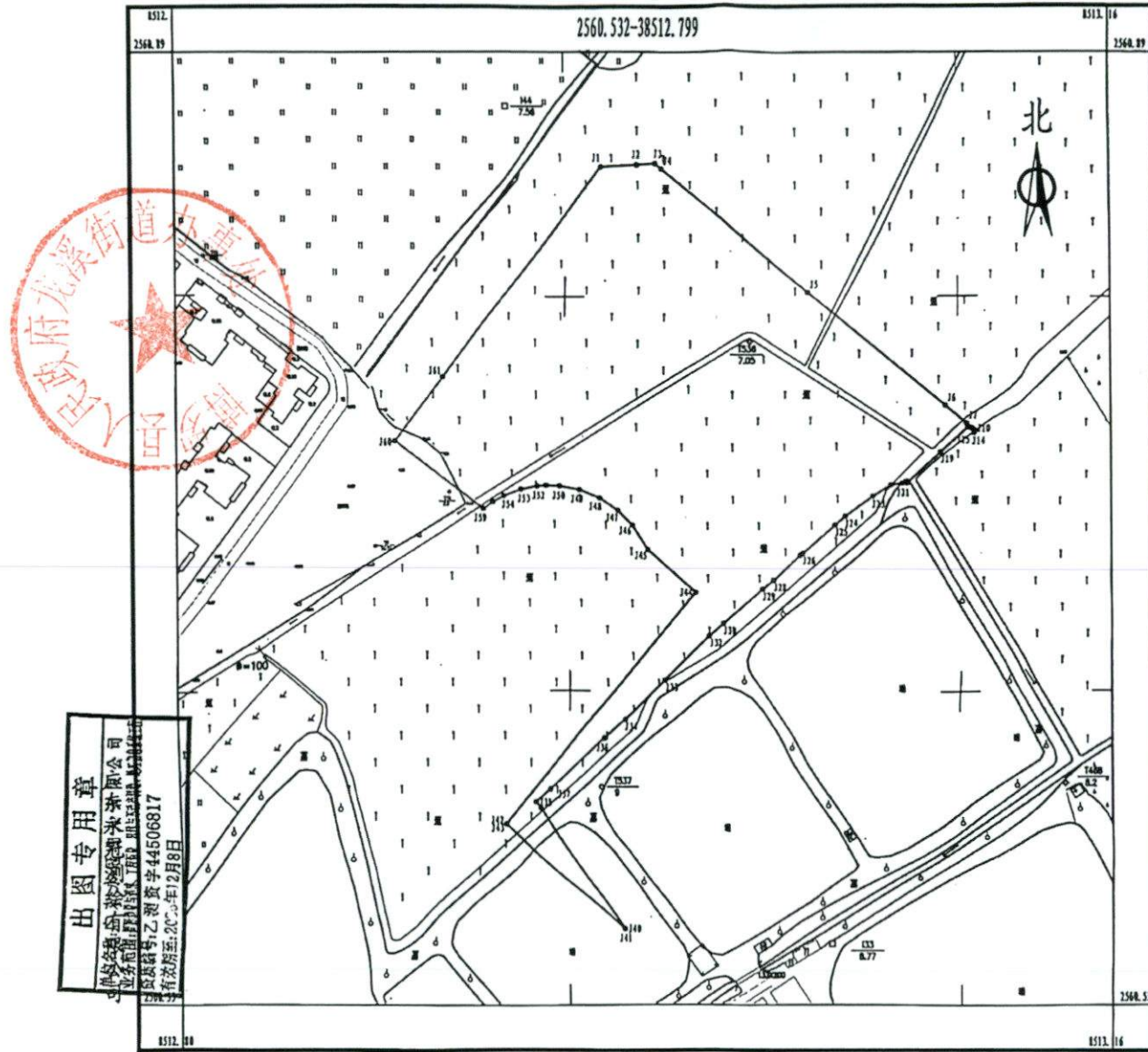


# 惠州市博罗县2025年度第七十批次城镇建设用地位置红线图



**出图专用章**  
 惠州市博罗县城市勘测设计有限公司  
 地址：博罗县罗阳镇广德路111号  
 电话：0752-2611111  
 统一社会信用代码：91441324MA5406817  
 2017年12月8日

界址点坐标表

点号	X	Y	面积
J1	2560848.079	38512964.348	13.83
J2	2560850.119	38512978.341	8.98
J3	2560850.834	38512985.252	3.16
J4	2560848.808	38512987.823	72.84
J5	2560801.871	38513043.308	87.71
J6	2560758.483	38513085.222	18.83
J7	2560751.871	38513103.388	2.83
J8	2560748.851	38513105.540	0.88
J9	2560748.278	38513108.223	0.01
J10	2560748.288	38513108.224	1.18
J11	2560748.084	38513108.322	0.02
J12	2560748.081	38513108.336	0.02
J13	2560748.070	38513108.300	0.02
J14	2560748.048	38513108.322	0.02
J15	2560730.107	38513103.818	3.18
J16	2560740.803	38513083.884	13.98
J17	2560740.588	38513083.738	0.08
J18	2560740.588	38513083.742	0.02
J19	2560740.354	38513083.731	17.17
J20	2560738.881	38513081.148	1.77
J21	2560738.881	38513078.380	4.34
J22	2560728.307	38513075.082	8.11
J23	2560724.011	38513088.328	12.88
J24	2560718.281	38513057.804	8.30
J25	2560713.175	38513053.888	18.34
J26	2560702.823	38513041.278	1.20
J27	2560701.787	38513040.300	13.98
J28	2560682.367	38513033.010	3.40
J29	2560688.885	38513025.788	20.20
J30	2560675.881	38513010.281	0.13
J31	2560673.807	38513010.182	7.30
J32	2560671.185	38513004.814	24.82
J33	2560654.171	38512988.888	21.48
J34	2560638.187	38512977.572	10.81
J35	2560632.187	38512983.804	0.08
J36	2560632.285	38512983.571	28.84
J37	2560613.363	38512942.028	7.31
J38	2560608.281	38512838.522	2.81
J39	2560608.280	38512838.420	98.28
J40	2560593.887	38512817.570	0.82
J41	2560590.885	38512817.286	81.04
J42	2560603.367	38512824.884	0.00
J43	2560603.367	38512824.884	118.08
J44	2560587.800	38512888.728	24.51
J45	2560763.850	38512881.178	11.18
J46	2560713.228	38512875.118	7.88
J47	2560718.887	38512888.437	8.47
J48	2560723.318	38512882.544	8.32
J49	2560728.340	38512854.587	-7.81
J50	2560727.888	38512848.803	8.20
J51	2560727.843	38512841.203	3.50
J52	2560727.281	38512838.214	8.32
J53	2560728.317	38512832.022	7.20
J54	2560723.740	38512825.288	4.85
J55	2560721.421	38512821.828	4.52
J56	2560718.808	38512817.200	0.00
J57	2560718.808	38512817.200	0.00
J58	2560718.808	38512817.200	0.00
J59	2560718.808	38512817.200	42.54
J60	2560744.813	38512883.541	31.03
J61	2560788.138	38512852.528	101.04
J1	2560848.079	38512964.348	

2025年6月数字化测图。面积：20871平方米。  
 2000国家大地坐标系，1985国家高程基准。  
 此图单独使用时，不作为权属依据。  
 2017年版图式。

1:1500

